

PART OF THE SW.1/4, SEC. 36, T.7N., R.1E., S.L.B. & M.

107

EDEN RANCHETTES &
AMENDED EDEN RANCHETTES (LOTS 2,3,4)

TAXING UNIT: 28

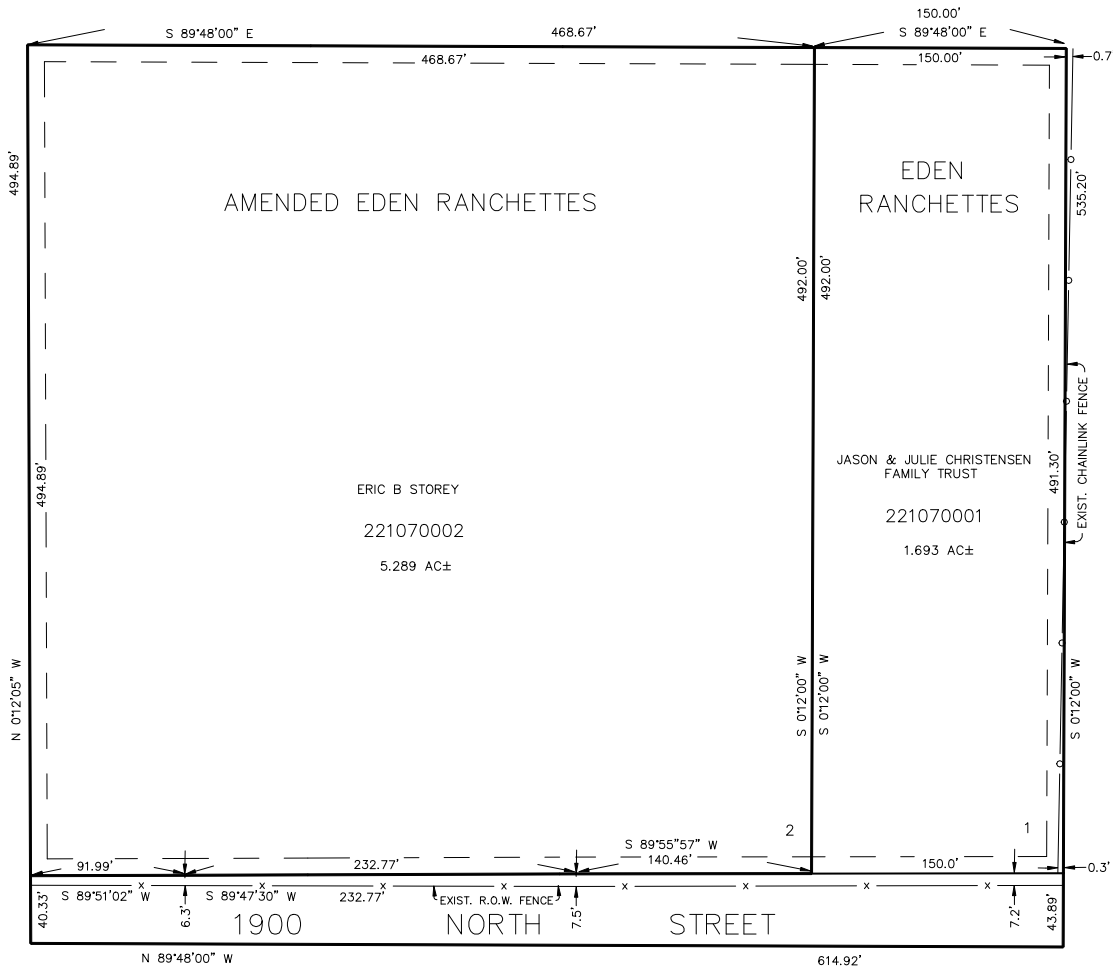
IN WEBER COUNTY

SCALE 1" = 60'

SEE PAGE 52

SEE PAGE 49

SEE PAGE 52



SEE BOOK 20, PAGE 1

10' UTILITY & DRAINAGE EASEMENTS EACH
SIDE OF PROPERTY LINES AS INDICATED
BY DASHED LINES EXCEPT AS OTHERWISE
SHOWN.

FOR COMPLETE ENG DATA SEE
ORIGINAL DEDICATION PLAT IN
BOOK 33, PAGE 42 OF RECORDS.

AMENDED PLAT BOOK 35, PAGE 6
OR RECORDS.